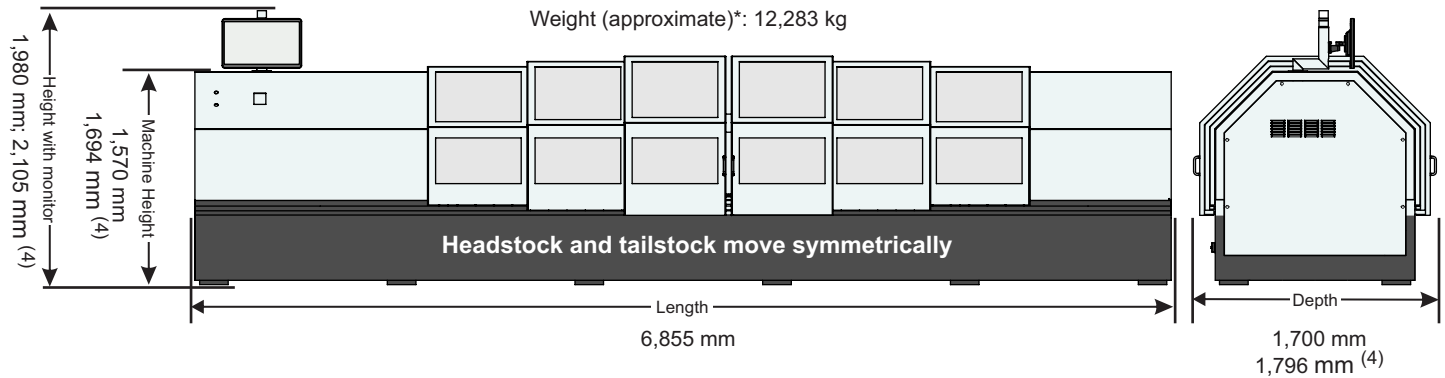
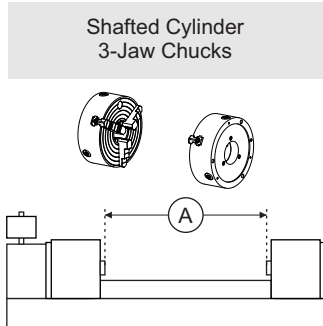


Machine Dimensions and Weight



Cylinder Fixturing Options



Cylinder Data

Circumference range	500 - 2,200 mm ⁽¹⁾
Weight maximum	1,300 kg
Allowable cylinder taper	75 μ m ⁽²⁾
Allowable runout	50 μ m
Copper hardness	190 to 230 HV
Deviation of copper hardness	+/- 5 HV

Shafted Cylinder

3-Jaw Chucks (315 mm)

Overall length (A)	950 - 3,600 mm
Face length (C)	350 - 3,000 mm
Shaft diameter (B)	30 - 75 mm

Shaft pass-through

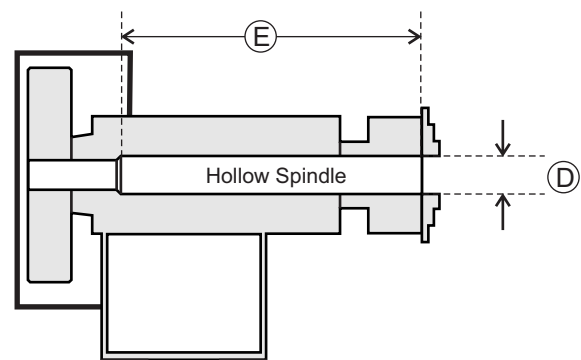
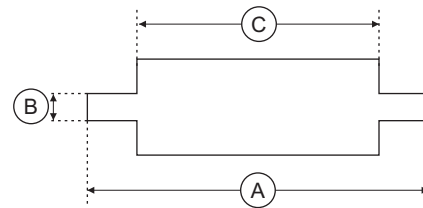
Bore Diameter maximum (D)	100 mm
Bore Depth maximum, each end (E)	500 mm

Shaft clamping

Diameter typical range	30 - 150 mm
Diameter, maximum	250 mm ⁽³⁾

Large Circumference Option

Cylinder circumference: 600 - 2,500 mm



(1) Maximum physical cylinder sizes. Engraveable Circumferences depend upon applied engrave head, engraving frequency, screen, and screen angle range.

(2) See Site Survey 9800-3143 for details. (3) Requires a chuck jaw reconfiguration. (4) Dimensions with Large Circumference Option * Weight does not include cylinder

Machine Technical Data

Environmental Temperature	20 - 25°C, 40-65% relative humidity, non-condensing	
Heat dissipation	1.5kW	
Floor bowing under load	0.2 mm/m	
	Execution according to DIN 18202	
	Do not use intermediate floors or support beams as machine foundation	
Maximum allowable floor vibration	Peak to Peak Amplitude	Frequency
	3.8 µm	2 - 8 Hz
	2.5 µm	9 - 15 Hz
	1.5 µm	16 - 21 Hz
	1.0 µm	>21 Hz

Connections

	Power	Voltage	FrequencyFuse
Power supply	5.00 kVA	1x220V +/- 3%	50/60Hz +/- 1%25A
	5.00 kVA	1x230V +/- 3%	50/60Hz +/- 1%25A
	5.00 kVA	1x240V +/- 3%	50/60Hz +/- 1%25A
Communication	Ethernet for Collage Interface. Internet connection, ideally via Collage computer, for TeamViewer remote support is strongly suggested		

Performance and Quality

Mode	3.2kHz	8.1kHz	8.6kHz
Engraving frequency (Hz) ⁽¹⁾	3200	8100	8600
Maximum engraving depth (µm) ⁽¹⁾	70	60	35
Engraving speed m ² /h ⁽¹⁾	0.46 @ 50 l/cm	0.81 @ 60 l/cm	0.38 @ 90 l/cm

Specialty options not listed (tranScribe, Hybrid, High Output). Refer to your quote or sales order for your information

Supplies

Engraving Stylus	90° to 160°
Vacuum bag	

⁽¹⁾ Performance for VISION3 MUL3281/86 engrave head. Additional engraving heads available

Note: Please reference the *Spectrum Site Survey* document (# 9800-3143) for more detailed information.

Ohio Gravure Technologies Inc. • 1241 Byers Road • Miamisburg Ohio 45432 • USA
+1 937 428 1700 • sales@OhioGT.com • www.OhioGT.com