

Installing Windows 10 and Collage with automatic Windows configuration

For Collage version 4.3.22 and higher

Updated for Windows 10 Professional version 1803

Introduction

This document gives instructions for installing and configuring Windows 10 and Collage.

The Windows 10 default settings will prevent Collage from running. Follow these instructions so Collage will run. If Windows has already been installed, go to *Configure Windows 10* on page 3 and follow the instructions.

To check what build of Windows 10 is installed, in the Search box, type winver and hit Enter.

Do not install 3rd party anti-virus or anti-malware or security software on the Windows 10 computer intended for Collage. Instead, use the built-in Windows Defender.

Collage is internationalized; the Collage modules are available in English, French, German, Italian, Spanish, and Polish. Collage will automatically use the language of the Windows OS.

Important note about the dongle

Do not plug in any dongle until instructed to do so.

Before beginning

Before beginning the Windows 10 install:

1. Check the BIOS. Make sure that the CD is the first device in the boot order.
2. Unplug any microphone, web camera, or second monitors plugged into this computer.

Install and Configure Windows 10

1. Insert the Windows 10 CD into the CD-ROM drive and reboot the computer.
2. When prompted, press any key to boot from the CD.

A black screen displays, showing Windows is loading files

3. Select the Language and Time and currency format to be used.
For Keyboard or input method, select your country. Click Next.
4. Click Install Now. Enter your Product key for Windows 10.

5. Accept the license terms then click Next.
6. You are prompted for the install type. Select **Custom: Install Windows Only (Advanced)**
Select the partition to install Windows on. This should be the largest and/or primary partition. Click Next
The screen displays the Installing Windows status. This will take a few minutes, then the computer will automatically reboot and continue the installation.
7. Select your region and your country.
8. Select your keyboard layout. If asked about a second keyboard, click Skip
9. The system will now check for Windows updates. Allow it to install the updates.
10. When asked How would you like to set up? select **Set up for personal use**
11. At the Sign in with Microsoft page, click **Offline account** in the bottom left.
If you are prompted again to sign in with a Microsoft Account, click No.
If you are asked to save files to OneDrive, click No

12. Enter the following:

Who's going to use this PC?	cls
Password	collage1
Security Questions	If you have an IT department, consult them. Otherwise, for each question, answer collageX where X is a number from 1 to 3

After clicking Next, the installation continues automatically. This takes a few minutes.

13. When asked Make Cortana your personal assistant? click **No**
14. On the privacy settings page, turn everything **OFF**
15. If the next screen shows "Networks" on the right, select **Yes**

The installation is completed. When the Welcome to Windows screen displays, close it.

Turn off Live Tiles to improve performance

Turn off all live tiles to greatly improve performance while using Collage.


Click the Windows start icon to display the Windows 10 start menu and tiles. To do this, right-click on every tile and select either Uninstall or Unpin from Start

Turn off Cortana to improve performance

Cortana runs continuously in the background collecting information to send to Microsoft. Turn Cortana off to improve performance while using Collage.

1. Click the search icon and select the gear icon. (Note this is different from the gear icon from the start menu)
2. Click each link on the left. On the right side, turn all the items **off**.

Check Network Setting

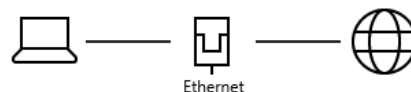
1. Click the Settings icon  and select [Network & Internet](#)
2. Under Ethernet, if this says Private Network, skip this step.

On the left, click Ethernet, then click Network

3. On the right, click Private

Close the Settings window

Network status



Configure Windows 10 with the Automated configuration

The following changes will ensure that Collage runs on Windows 10.

Before you begin, make sure you have already downloaded and installed all Windows updates.

Put the OHIO Configuration Files on the desktop

If you have a CD with these files, copy them to the desktop. Download from our website: <https://www.ohiogt.com/a/CollageSetupFiles.zip> (Note: Copy and paste address into your web browser address bar.) Unzip the files to the desktop.

1. collage-reg1.reg – This contains system registry settings
2. collage-reg2.reg – This contains user registry settings
3. collage-winupdate.reg – This contains Windows Update registry settings
4. collage-setup.ps1 – This is the PowerShell script that automatically configures Windows 10 for use with Collage.

Run the Registry files

Double-click collage-reg1. Click Yes to allow changes, then Yes to confirm you are sure, then OK to end.

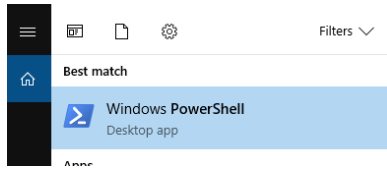
Double-click collage-reg2. Click Yes to confirm, then OK to end.

Double-click collage-winupdate. Click Yes to confirm, then OK to end.

Run the PowerShell script

1. Press the Windows key plus the X key. A list displays.
2. Select Windows PowerShell (Admin)

If Windows PowerShell (Admin) does not display on the list, in the search bar, type PowerShell.



Right-click on Windows PowerShell (Desktop app) and select Run as administrator

3. A window opens. At the prompt, enter the following exactly as shown (yes, "-executionpolicy" is typed twice. Watch the spaces.):

```
set-executionpolicy -executionpolicy unrestricted -force  
cd C:\Users\cls\Desktop
```

In the following command, be sure to type the "dot" (period) then the slash (\) as shown:

```
.\collage-config.ps1
```

Text displays as the configuration is completed. When done, press Enter to continue.

4. At the prompt, enter the following to reboot:



```
shutdown /r
```

It will take a few moments for the shutdown to begin. Be patient.

You will see the usual Windows message about waiting while updates are applied. The computer will automatically restart. When done, log in to cls.

You can delete the set up files from the desktop.

Open the Settings App

Click the Windows icon  and click the Settings icon  to open the Settings window. Under Personalization, we recommend changing the following settings:

1. Show the Computer and Network on the desktop by selecting [Themes](#)

In far right column click [Desktop icon settings](#)

Under Desktop icons, select Computer, Network and Recycle Bin.

Turn **off** Allow themes to change desktop icons

Click OK.

2. Select [Lock Screen](#)

Set Background to Picture. Do not use Windows Spotlight which uses too many resources.

Turn **off** Get fun facts, tips, tricks, and more on your lock screen

Scroll down and select [Screen saver settings](#). Select preferred screen saver and delay time.

3. Select [Start](#)

Turn **off** Occasionally show suggestions in Start

Make sure Show app list in Start menu is on.

4. Select **Background**

Under Background select Solid color and click preferred background color.

Taskbar Icons

Windows includes default icons on the left side of the Taskbar that are not needed for Collage. We recommend hiding some, as follows:



- A Opens the Start menu. You cannot hide this.
- B Search bar. You cannot hide this.
- C Task View. Right-click and turn off Show Task View button
- D The Microsoft Edge Browser
- E Libraries. Right-click and select Unpin this program from task bar
- F Store. Right-click and select Unpin this program from task bar
- G Mail. Right-click and select Unpin this program from task bar



Change folder view

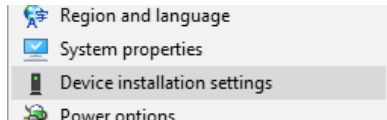
1. Search > File Explorer
2. Click View tab. In ribbon, select the view you want, such as List.
3. At far right of ribbon, click Options then select Change folder & search options
4. In the dialog, on the View tab, click Apply to Folders

Installing the Collage Software

Disable the virus scanning software (if any) before beginning this procedure.

Before Installing any Dongle **IMPORTANT**

1. Open the Control Panel, then click Devices and Printers
2. Right-click the icon for the computer and select Device installation settings



3. In the window under [Do you want to automatically download manufacturers' apps and custom icons that are available for your devices?](#) select **No** and click Save changes

Install the Collage Software

1. Insert the CD and open it.
Open the **WINNT** folder.
Open the **CLS-S** folder.
2. Right-click setup.exe and select **Run as Administrator** from the menu.
If you do not do the install using Run as Administrator, Collage will not install correctly.
3. Follow the instructions on the screen to install Collage and the additional programs: Microsoft Visual C++, Sentinel and Perl

On the Collage Data Location page, the drive where clsdata should be is suggested. This is the folder where all jobs will be stored. The only time this should be changed is when the computer has two hard drives; in that case, select the largest hard drive. The folder must be called clsdata.

When the message displays that you should share out the dataspace, click Yes.

Install the Collage Dongle

To install the Collage Hasp dongle:

1. Shut down the computer and turn off the power.
2. Attach the Collage software dongle to an open USB port on the computer.
3. Turn on the computer, and log in as **cls** user.

After a moment, the dongle's red light will come on, indicating it is working properly.

Important! If the dongle's red light flashes, DO NOT REMOVE the dongle. The dongle firmware is being updated. If the dongle is removed while the light flashes, the dongle will be destroyed. Contact Customer Support if the flashing light does not become a steady light after half an hour.

Reboot the computer when the installation is complete.

Configuring the Collage Computer

Log in as **cls**.

Change Icon Settings

Right-click on the desktop, select View then Small Icons.

Indexing

Turn off indexing for the clsdata folder if it is on.

1. Right-click on clsdata folder > Properties > General > Advanced button.
2. Turn **off** the checkbox next to Allow files in this folder to have contents indexed in addition to file properties. OK, Apply
3. If asked, select This folder, subfolders and files. OK

Share the clsdata folder and set permissions

While the installation shares the clsdata folder, there are additional settings to be done.

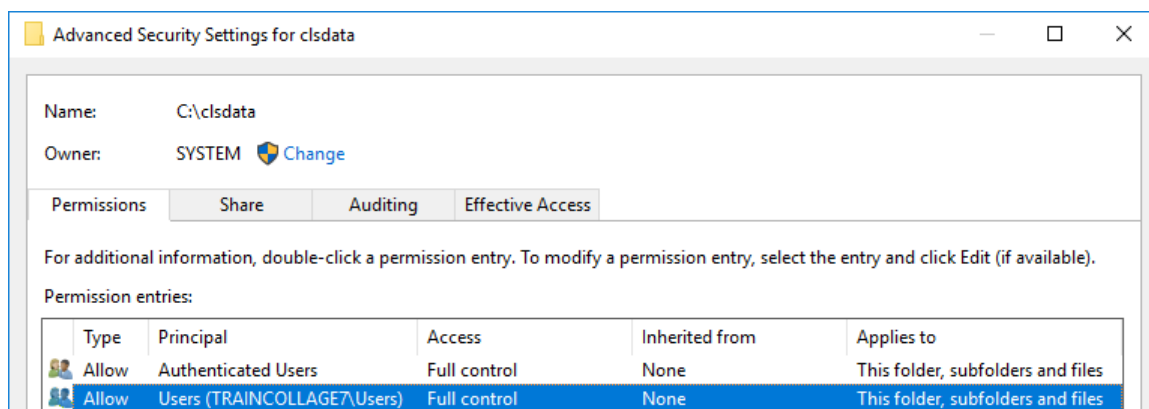
1. In the clsdata Properties window > Sharing > Advanced Sharing
2. Ensure Share this folder is checked and Share name is clsdata
3. Click Permissions
4. Under Group or user name, select Everyone. Ensure the Permissions for Everyone is set to Allow Full Control. Click Apply, then OK, then OK
5. In the clsdata properties window > Security tab > Group or user names

Click on each item listed and verify that Permissions are set to Full Control for all of them.

If any item in the top pane does not have Full Control permission, select it, click Edit, and set the permission to Full Control.

6. In the clsdata properties window > Security Tab > Advanced.

On the Permissions tab, look at the Access column. Most should have Full Control and Inherited from says None.



Pin clsdata to Quick Access

During the following configuration steps, it helps to pin clsdata to the Quick access toolbar.

1. In This PC open the clsdata folder.
2. With clsdata open, right-click on Quick access and select Pin current folder to Quick access

Select the Server for each Collage Module

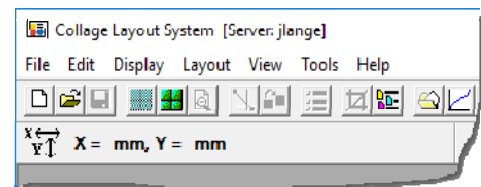
The *server* is where all the jobs, images, gamma and sharpness curves, and cylinder geometries are stored. If there are two or more Collage computers, you can choose to have one computer act as the server or each computer can be its own server.

To select the server:

1. Start Collage using the desktop icon. A message displays informing you that a server must be selected. Click OK
2. Select the clsdata folder.
3. Select the svr file and click Open.

Open each Collage module (except Archive Manager and the Help) and select the svr file.

The server is indicated in the title bar of each application



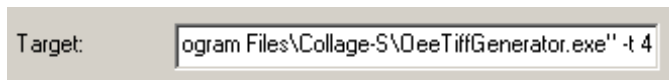
Configure Import Source(s)

To configure the import source folder, see *Using the Configuration Utility for Collage* (9430-0106).

Configuring the Tiff Generator

If this site will produce Tiff output, configure it for faster performance:

1. Right-click on the Tiff Generator icon on the desktop > Properties > Shortcut tab.
2. In the Target: field, click once after the existing text, so the blinking cursor appears.
3. Press the space bar, and type a minus, the letter t, a space, then a number such as '4'. The -t 4 should appear *outside* of the quote marks, like this:



Configure Printers

Consult the documentation for your printer and the Windows 10 documentation.